



Norm !Edwards Sensitive Country

Speed The Light enables us to do what we do. Without the sacrificial giving of the youth in the Rocky Mountain District we would be limited to travel in close proximity of where we live.

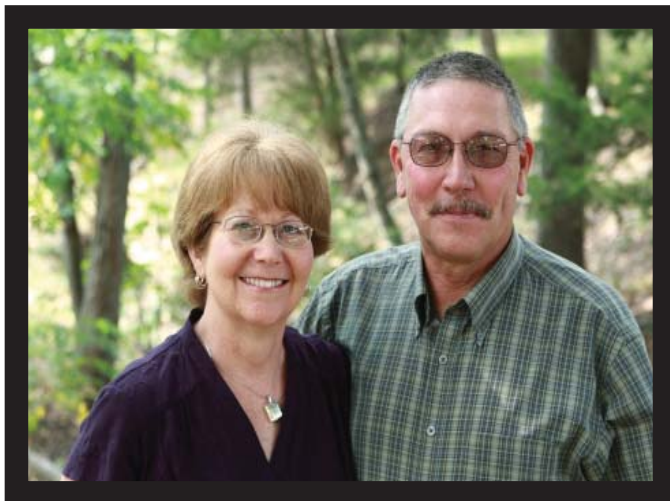
Our job requires us to travel to seven countries of the former Soviet Union. Our work is focused on the unreached people and places that have no access to the gospel. Those people are sometimes unreached and unexposed because it is difficult to get to them. Our STL SUV can help us get there. STL makes it possible. The weather here is pretty brutal it snows for 7 to 8 months of the year and they very rarely clear the snow in the capital city and never clear it anywhere beyond that. When the snow melts it reveals potholes often three feet by three feet and a foot deep. Our STL SUV (Kia Sorento) is the only vehicle that could keep us traveling in those condi-



tions. I can't tell you how many times we have said to each other thank God for STL and the Youth of RMDC. We feel like words of thanks are so inadequate to express our gratitude so we are asking God to express it to all of you through His blessings.

The only disadvantage to having such a great car is always having to stop and help pull other cars out of the snow :)

Norm !Edwards, Area Director Sensitive Country
norm.edwards@agmd.org
USA Mobile (417) 379 2092



Nicky & Janie Rider Country: Mexico

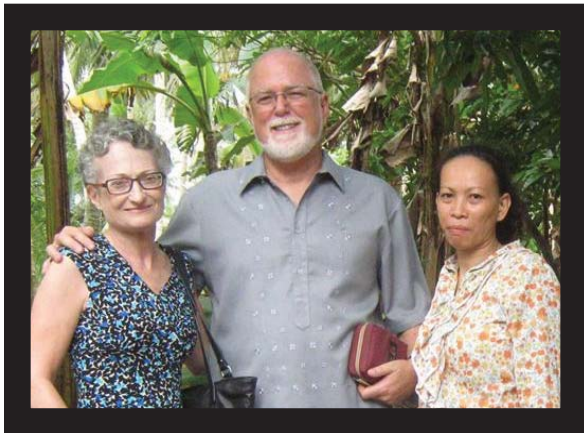
We are Nicky and Janie Rider, construction missionaries in Mexico. We are grateful to the youth of the Assemblies of God who provided our first STL vehicle, a Chevy Avalanche! Unfortunately, it was stolen from the parking lot of Home Depot in Chihuahua! However, we had insurance and were able to replace it quickly. We often travel over dirt roads that take 5 hours to go 35 miles and we pull a trailer that when fully loaded weighs 10,000 lbs. Just think, it would take 200 teens pulling 50 lbs. each to pull it! So when

we return to Mexico in 2011 after itineration, we need either 200 teens to come with us or we need a ¾ ton, 4 wheel drive pickup with a monstrous motor and multiple anti-theft devices!!!

Nathan & Yuka Williams Country: Japan

Project amount: \$4000 to refurbish a STL vehicle Speed The Light has been a huge blessing to us! Due to another missionary couple receiving their STL funding to buy a new vehicle we were given their old van which we traded in for a newer minivan. That minivan has enabled us to engage in all kinds of ministry such as: take Japanese students to church with us, haul campers and gear to Bible camp, minister at other churches, and the ministry of taking care of our own family (read grocery shopping) so we can continue ministering to others. Since we live in an area where there's not much public transportation a vehicle is a necessity for life. The reason we've requested finances is once we return to Japan there we'll need

to make some minor repairs on the minivan and buy some tires and a battery as well to keep it in good operating condition. If you want to see what the van looks like, go onto Google Earth and put (copy and paste) these coordinates in the Search/Fly To field: 35 52' 35.68" N 139 25' 49.28" E. Click on the Street View camera centered at that spot. Then pan to the right (almost 180 degrees) until you see a silver van in the middle of an intersection. That's what the STL minivan looks like! Pretty cool isn't it! Thank you so very much for partnering with us to take the Gospel to the Japanese!

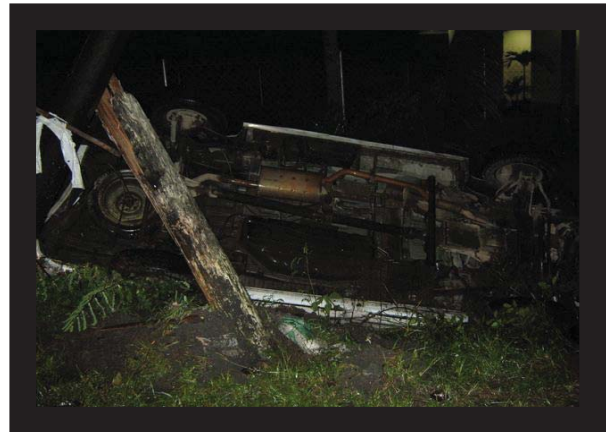


Mark & Fredda Alston Country: Philippines

Missionary Mark Alston was driving home in his STL Ford SUV from a church strengthening rally in a heavy rain, on Nov 24. Because of road conditions and poor visibility, he was driving slowly. It was too slow for the van following him; the driver decided to pass. She returned to the lane prematurely and hit the SUV. Both vehicles were flipped by the force of the impact and slid down a slope into a swamp.

Praise the Lord for His protection as Mark's only injury was a scratched elbow. Due to the position of the vehicle, he could not get out until people living nearby removed the STL sound system so they could pull Mark out the tailgate.

After checking with the mechanic and STL, it was decided Mark should purchase a new vehicle (water in the engine, extensive damage). A new vehicle costs \$32,500, of which \$14,130 is being paid by STL insurance. That leaves \$18,370 still needed. The Alstons use their vehicle for church planting, outreaches, transporting teams, visiting churches on the islands of Leyte and Samar.



Thank you for your help!

For the harvest,

Mark and Fredda Alston, markalston@gmail.com



Richard Smallie Country: Spain

Currently, there is a vehicle in Spain another missionary is keeping and will make available once we arrive (June 2011). We are extremely grateful to students who contribute to STL so that we can move around the country doing what God has called us to do. Being in a large country like Spain it is difficult to accomplish what we are called to do without the means to get around.

Rich@Smallie.org